



Nissan Intelligent Mobility moves you one step ahead. In cars that feel like an extension of you, helping you see more and sense more, reacting with you, and sometimes even for you. Nissan Intelligent Mobility is about a better future – moving us to a world that's safer, more sustainable, and exciting.



LIVINA



www.nissan.ph
www.facebook.com/NissanPhilippinesInc

(02) 8403-6593 / (0927) 600-9557
CUSTOMER ASSISTANCE CENTER

Photo may vary from actual unit.



LIVIN' THE EXCITEMENT

Discover a vehicle built with excitement, safety, and efficiency in mind. With seven seats and spacious storage, the All-New Nissan Livina gives you the ease and confidence to make the most of life in the city with the entire family.

SAFER WITH NISSAN INTELLIGENT MOBILITY TECHNOLOGY

The Livina is equipped with Hill Start Assist and Vehicle Dynamic Control technology, features that help provide a more stable ride. It also has a Reverse Camera, Parking Sensors, ISO-Fix, and SRS Airbags to keep the family safe inside the vehicle at all times.

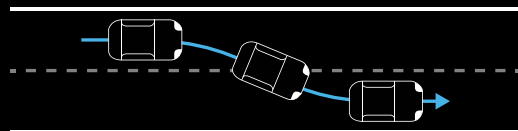


Hill Start Assist



Reverse Camera

With Vehicle Dynamic Control



Without Vehicle Dynamic Control

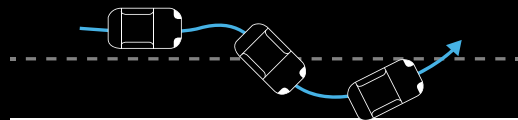


Photo may vary from actual unit.

BUILT-IN ENTERTAINMENT

Equipped with a 7" Touchscreen Audio Display with phone link & bluetooth connectivity, charging ports, and a 6-speaker system, the Livina is ready to entertain the family.

SPACIOUS COMPARTMENTS AND COMFORTABLE 7-SEATER

Provide a space for everyone inside the Livina's roomy 7-seater interior with multiple storage spaces. The family-friendly vehicle is also equipped with fold-flat rear seats and front and rear air-conditioning for maximum comfort.



LIVINA		LIVINA			
SPECIFICATIONS AND FEATURES		1.5 VL AT	1.5 VE AT	1.5 EL AT	1.5 E MT
ENGINE / TRANSMISSION					
Engine Type		1.5L DOHC			
Maximum Power	ps / rpm	105 / 6,000			
Maximum Torque	Nm / rpm	141 / 4,000			
Fuel Tank Capacity	Liters	45			
Transmission Type		4-Speed A/T		5-Speed M/T	
CHASSIS / TIRES & WHEELS					
Suspension	Front / Rear	MacPherson Strut with Coil Spring / Torsion Beam			
Brakes	Front / Rear	Ventilated Disc / Drum			
Tires		205/55 R16		185/65 R15	
Wheels		16" Machine-Finished Alloy		15" Silver-Painted	15" Steel Wheel
DIMENSIONS & WEIGHT					
Dimensions (L x W x H)	mm	4,510 / 1,750 / 1,700		4,510 / 1,750 / 1,695	
Wheelbase	mm	2,775			
Curb Weight	kg	1,250	1,245	1,230	1,225
Gross Vehicle Weight	kg	1,790			
Seating Capacity	Persons	7			
FUNCTIONS					
Power Windows		With			
Power Door Locks		With			
Keyless Entry System		With (Intelligent Key)	With Remote		Without
Push Button Engine Start/Stop System		With		Without	
Air conditioning System	Front / Rear	Dial-Type Manual / With Rear Cooler			
Audio	Type	7" Touchscreen Display*		2-DIN	7" Touchscreen Display*
	Connectivity	Phonelink / Bluetooth (Audio Streaming) / USB / Aux / Tuner*		USB / Aux / Tuner / CD	Phonelink / Bluetooth (Audio Streaming) / USB / Aux / Tuner*
	Speakers	6	4		2
SAFETY / SECURITY					
Hill Start Assist (HSA)		With		Without	
Reverse Camera		With		Without	
SRS Airbag		x2 (Front)			
Seat Belt	Front / 2nd Row / 3rd Row	3-point ELR with Pretensioner / 3-point ELR / 3-point ELR			
Anti-Lock Braking System (ABS)		With			
Vehicle Dynamic Control (VDC)		With		Without	
Traction Control System (TCS)		With		Without	
Parking Sensors		With		Without	
ISOFIX and Tether Anchor		With			
High Mount Stop Lamp		With			
Alarm System		With (with Immobilizer)		With Immobilizer Only	
EXTERIOR					
Headlamps	Headlights	Multi-Reflector Halogen			
	Daytime Running Lights (DRL)	With		Without	
Front Foglamps		With		Without	
Tail Lamps		Combination Lamp with Signature LED			
Front Grille		Chrome V-Motion			
Bumpers	Front and Rear	Body Color with Silver Accent	Body Color with Black Accent		
Side View Mirrors		Chrome with Turn Signal Light, Auto-Fold and Power Adjust Functions	Body Color with Turn Signal Light, Auto-Fold and Power Adjust Functions	Body Color with Turn Signal Light and Power Adjust Functions	
Window Molding		With (Chrome)		With (Black)	
Door Handles		Chrome		Body Color	
Wipers	Front / Rear	Variable Intermittent 2-speed / Variable Intermittent			
INTERIOR					
Seats	Driver	6-Way Manual Adjust		4-Way Manual Adjust	
	Front Passenger	4-Way Manual Adjust			
	2nd Row	60:40 Split with Fold & Tumble, Slide, and Recline Functions with Center Armrest			
	3rd Row	50:50 Split with Fold and Recline Functions			
Color (Material)	Black (Leather)			Beige (Fabric)	
	Brown (Fabric)				
Steering Wheel	Material / Adjustment	Leather / Tilt and Telescopic		Urethane / Tilt and Telescopic	
	Controls	Audio and Handsfree Phone		Without	
Instrument Meter Cluster		Color LCD	Mono-Tone LCD		
Rear-View Mirror		Manual Day/Night			
Sun Visor	Driver / Passenger	Driver (With Ticket Holder) / Passenger (With Vanity Mirror)			
Room Lamps		With			
12V Power Socket		Dashboard (x1), Center Console (x1), Rear (x1)		Dashboard (x1), Rear (x1)	
USB Port		Center Console (x2)		Center Console (x1)	Center Console (x2)
Bottle/Cup Holder		Front: Center Console (x2), Door Panel (x4) / 2nd Row: Door Panel (x4) / 3rd Row (x2)			
Inside Door Handle		Chrome		Material Color	
Storage		Luggage Tray, Passenger Seat Tray, Seat Back Pocket			Luggage Tray, Passenger Seat Tray, Seat Back Pocket (Passenger Side Only)
Floor Mat		With (Nissan Genuine Accessory)			



Royal Ruby Red



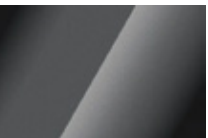
Diamond Pearl White



Onyx Black



Platinum Silver



Moonstone Grey



Nissan Philippines, Inc. reserves the right to alter, delete, or enhance features and specifications without prior notice depending on market requirements.
*Option Available